



NH Children's Behavioral Health Collaborative

November E-News

In This Issue

[Summit for Policy Priorities](#)
[Shining a Light on Mental Illness](#)
[NH Changing Demographics](#)
[Bullying Prevention month](#)

Collaborative News

At the year of this year's Summit we asked that everyone return a filled out evaluation form to be entered into a raffle for four door prizes.

Our winners are:

Celia Slason
Heather Mason
Angela Ford
Christine O'Hearn

Congratulations!

To download a PDF of all articles
[Click Here](#)



Collaborative Summit Builds Foundation for Policy Priorities

Early in October, the Children's Behavioral Health Collaborative Summit was held. 162 people attended, a whopping 25 percent increase from the 2014 Summit.

[Read More](#)



Shining a Light on the Impact of Mental Illness

During National Mental Illness Awareness Week 2015, NAMI NH led the way in highlighting the impact that mental illness has



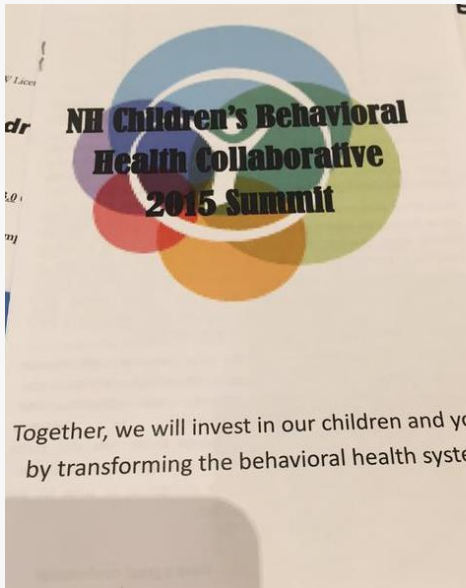
upon individuals and families NAMI NH hosted its two signature events during that week to help raise awareness and combat stigma.

[Read More](#)

NH Steps Up to Address Changing Demographics

All children and families need to be able to access the system of care that the Collaborative is building.

[Read More](#)



Looking Back at October: National Bullying Prevention Month

National Bullying Prevention Month is designed to build awareness of bullying and discrimination. It also aims to bring together those who have felt they were victims of bullying to support each other and advocate for change.

[Read More](#)

Follow us on Social Media



NH Children's Behavioral Health Collaborative
10 Ferry Street, Suite 308
Concord, New Hampshire 03301
kbeck@new-futures.org